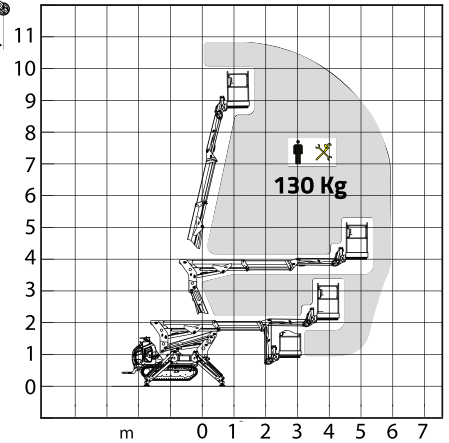





	C1500		C1600	
	mm	in	mm	in
A	1960	77.2	1960	77.2
B	4120	162.2	4120	162.2
C	2030	80.0	2030	80.0
D	1930	76.0	1930	76.0
E	1980	78.0	1980	78.0
F	1060	41.7	1060	41.7
G	1140	44.9	1140	44.9



		C1500	C1600
OPERATIVE CAPACITY		1500 kg 3307 Lb	1600 kg 3527 Lb
ATTACHMENT WEIGHT		1100 kg 2425.1 Lb	1100 kg 2425.1 Lb
MACHINE WEIGHT		910 kg 2006 Lb	919 kg 2027 Lb
TOTAL WEIGHT		2010 kg 4431.1 Lb	2019 kg 4452.1 Lb
HEIGHT		11 m 36.1 FT	11 m 36.1 FT
MAX CAPACITY	(f+e)	130 kg 286.6 lb	130 kg 286.6 lb

